

# Serpentine Gallery

## PAVILION PROPOSAL



Gustavo Rangoni

Santiago Mesa Sanchez

María Eugenia Blanco

Paula Melito

Miguel Minond

Sofía Neuenschwander Viel

**bau**  
ARQUITECTOS

Cavia 3108, Buenos Aires, Argentina

+54 9 11 4801-8833

bau@bauarquitectos.com

bauarquitectos.com

The Project

The looking game

The place that we live in, the world we inhabit is the same for all of us, this world full of asymmetries, inequalities, differences, is a world where we do not look at ourselves, where the look towards others is increasingly distant, distant and lacks understanding. **How much time do we spend seeing others, seeing ourselves, recognizing daily feelings and sensations?**

Why not see each other, look at what happens to us as societies, as cultures, as individuals, understanding those differences, those difficulties we have in understanding each other, not being able to see what happens to the other.

The project proposes to return to those needs, proposing within **A perceptual ring** the idea of looking out and being able to see ourselves, in a space where those crossed, different, different looks can appear, those feelings and experiences, dissimilar that produce the game of gazes , own, others, crossed, where "Mirrors" placed randomly, invite us to look at ourselves, to reflect and go through this experience.

What thoughts will appear and emerge in front of these mirrors that confront us, that demand our attention and focus? What things do we see daily in our daily reflections that we choose to ignore? What message will we find if we immerse ourselves in the experience of looking at ourselves in another way?

An outer skin, the container, the frame, of "A Perceptual Ring", marks the physical limit, with the visual experience of the interior, that of the gazes, the perimeter of an opaque material (brick) contrasts and lets see the reflection from the interior the one of "the Mirrors".

The exposed Architecture is the structure that contains those different, dissimilar and fun experiences, let's enjoy this wonderful recreation for our **senses**.

We went through the work recovering the eyes of children, the eyes that we were training so as not to be surprised at anything. **Let's put life on hiatus for a while and reconnect with those we don't know, inside and out.**

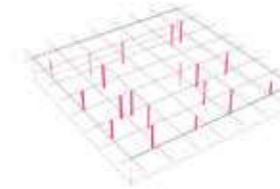
## The IDEA



PERCEPTUAL RING



THE MIRROS



THE GRID



THE ROOF

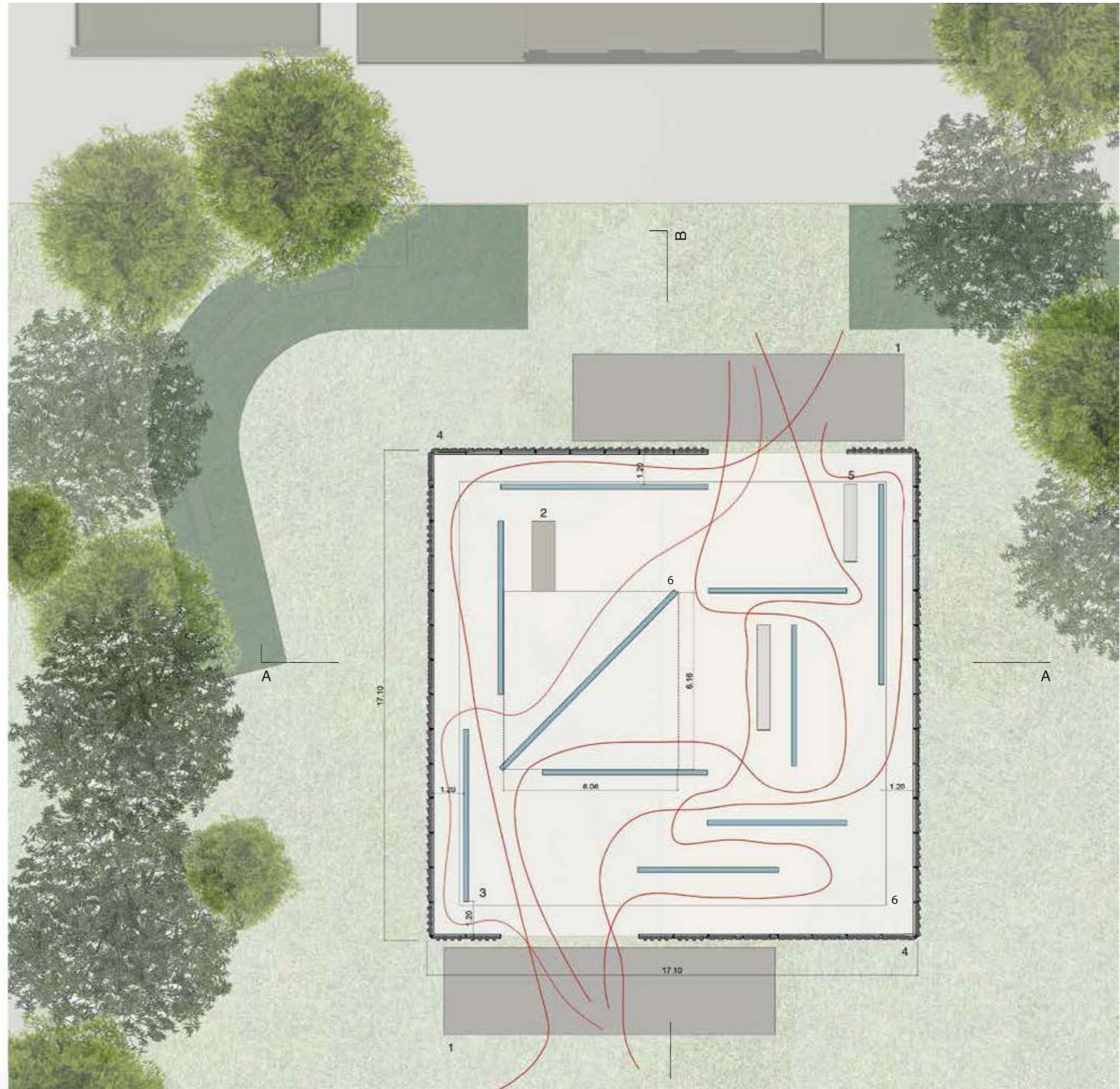


THE PROJECT

# The Project

## | Floor

- 1 Access
- 2 Bar
- 3 Mirror
- 4 Perceptual ring
- 5 Bench
- 6 Ceiling reference line



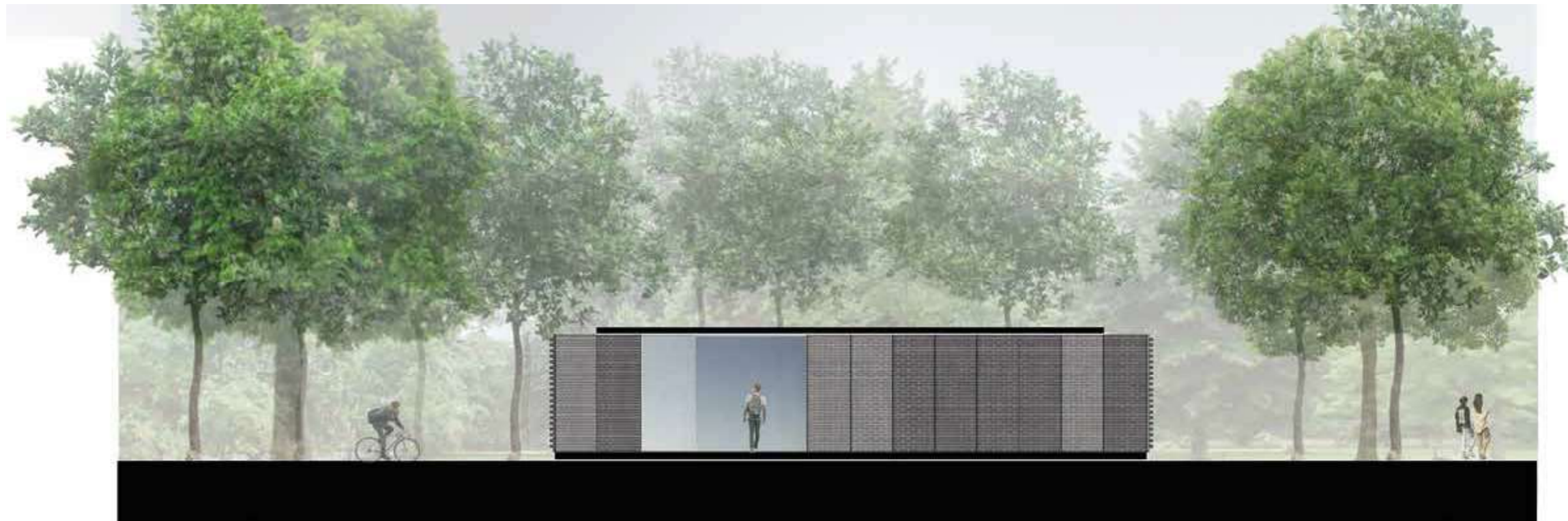
# The Project

## | Elevations

ELEVATIONS



Front view



Back view

# The Project

## | Elevations

ELEVATIONS



South west view



North East view

# The Project

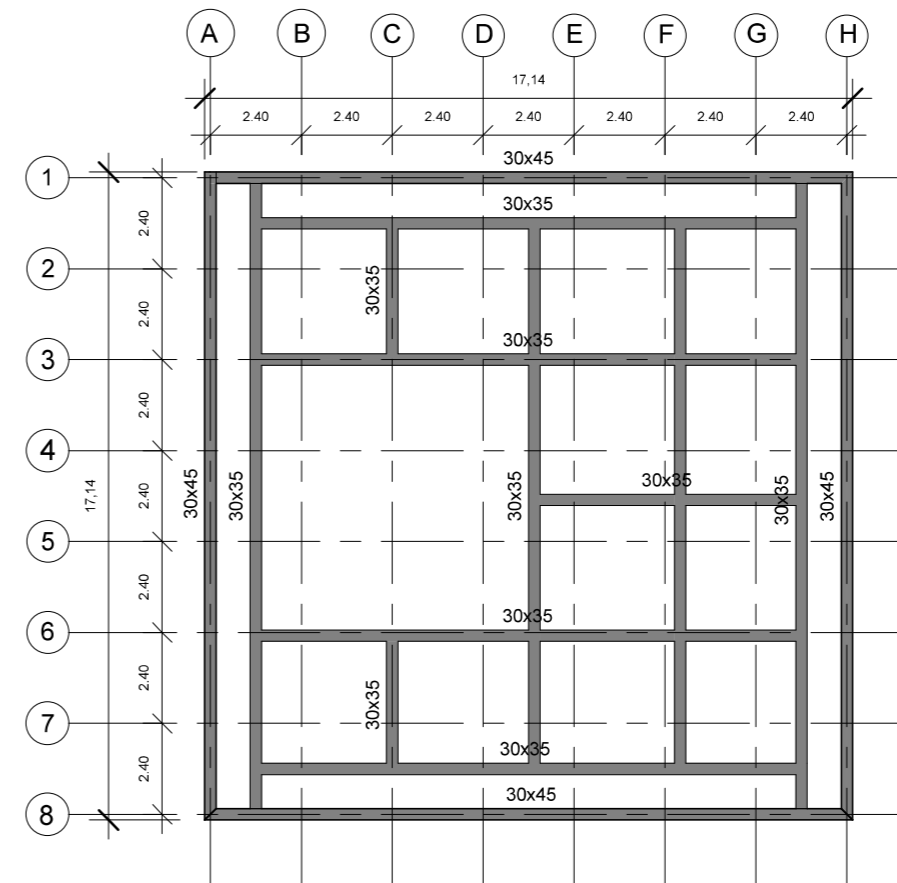
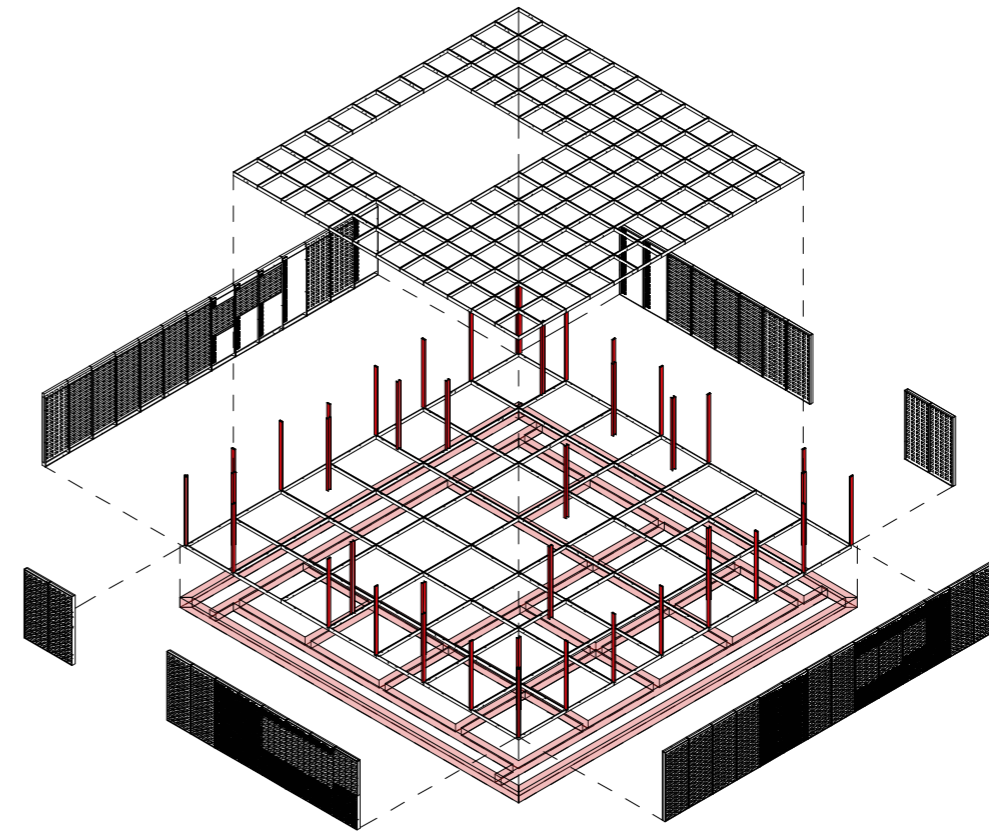
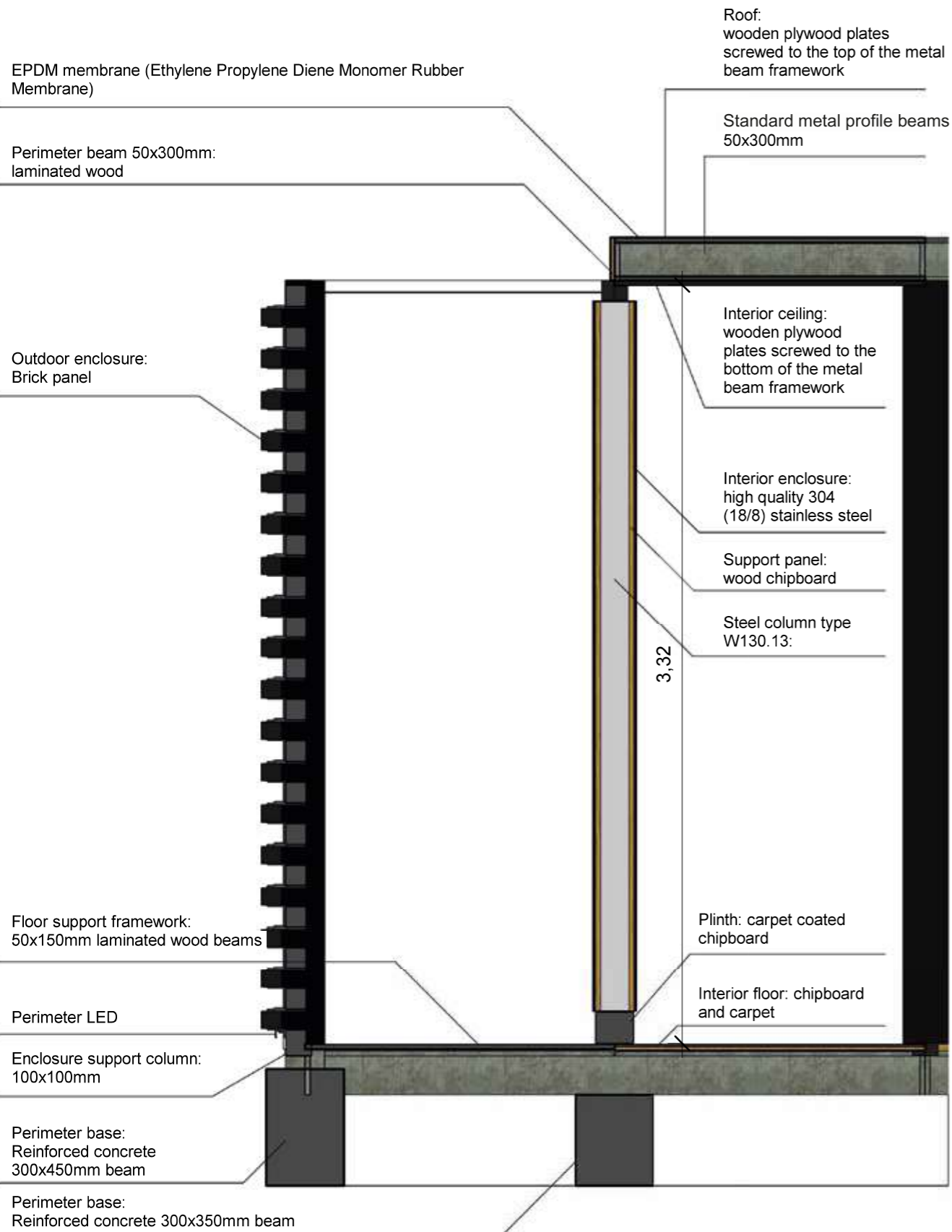
| Sections

Section A-A



Section B-B





Base

Mirror

Box

Roof

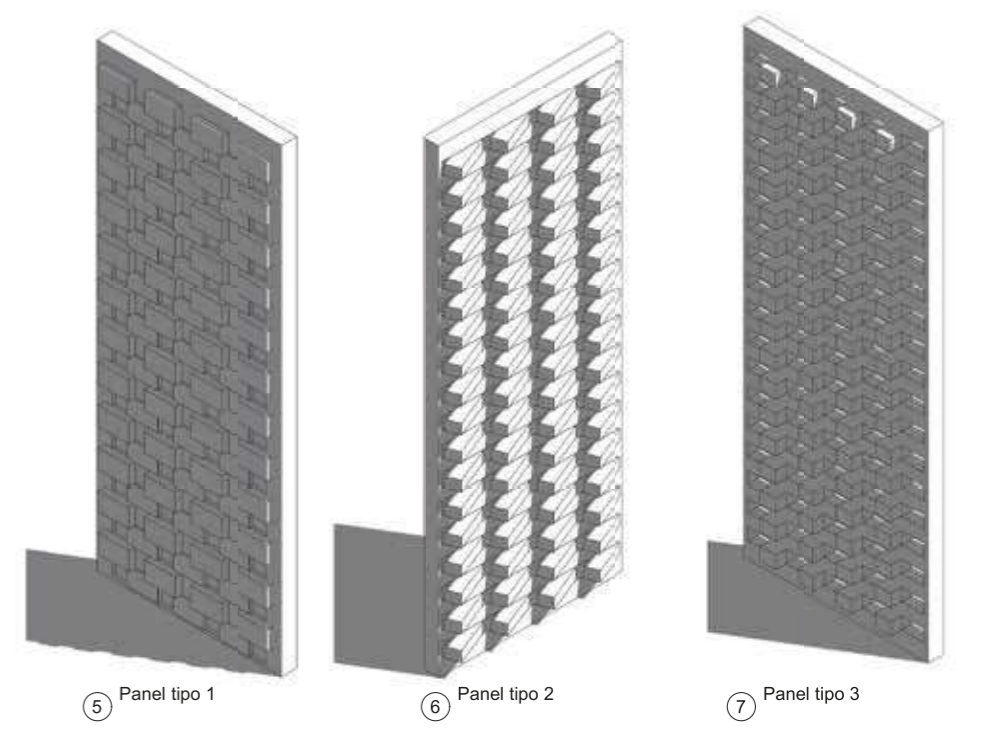
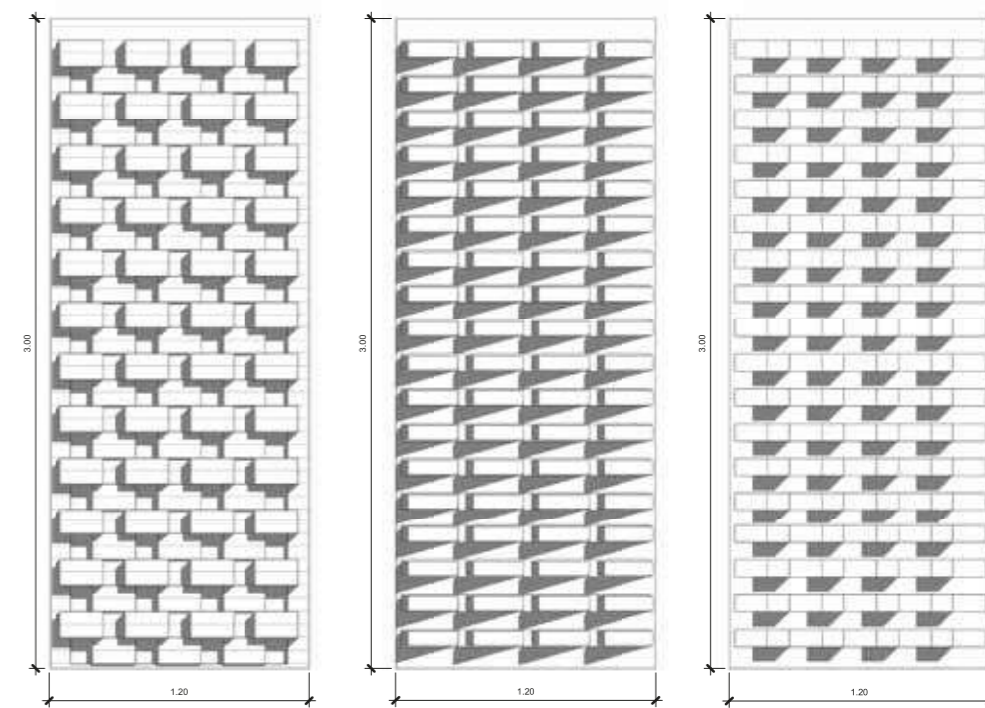
# The Materials

The structure is a grid of metal beams that intersect perpendicularly with a **240 x 240** module. The set works as a mesh that is supported randomly that follows certain design criteria: **It does not rest on the ends.** The columns are inside the panels and correspond to the intersections of the structural grid. The maximum distance between supports is two modules. The minimum distance is one module.

The interior panels are lined, on both sides, with high quality 304 (18/8) stainless steel, which fulfill the function of **mirrors**. The columns are formed from a closed box formed by two standardized steel profiles that will be anchored to a series of concrete bases. The bracing of the columns will be carried out by means of hidden crosses inside the panels.

The perimeter is self-supporting. Metal frames hanging from a secondary structure based on T-section steel posts that are anchored to a concrete beam welded by steel plates to reinforced concrete pilings. The frames contain the dark gray brick wall, with a rustic finish, with different types of frames, which make up the perimeter skin, "**the perceptual ring**", which in turn gives visual permeability from the outside.

The enclosures that were designed for the roof must fulfill a double function: The roof structure is covered with plywood plates screwed to the top and bottom (as a ceiling) of the metal beam framework. The cover will have an **EPDM** membrane (*Ethylene Propylene Diene Monomer Rubber Membrane*). For the base, the same structural system is proposed with the exception that the supports will be made regularly at each intersection between beams, so that the spans do not exceed the dimension of the module and the brackets' squares can be reduced.



Materials











**bau**  
ARQUITECTOS